

HARBOURFRONT INTERNATIONAL SCHOOL

May Newsletter



A JOYFUL START AT HARBOURFRONT IS

Dear Parents,

It's hard to believe that our very first day of school on April 4 was already a month ago! As we welcomed our youngest learners here at Harbourfront IS, we were filled with joy watching them take their first steps into a nurturing and play-based environment.

Harbourfront International School is currently pursuing candidacy to become an IB Primary Years Programme (PYP) school. In line with this, we believe in nurturing each child's natural curiosity and building foundational skills through meaningful play, exploration, and relationships.

Over the past few weeks, your children have been engaging in hands-on learning, settling into routines, and forming friendships—essential elements of the IB PYP Early Years philosophy.

Thank you for your support as we begin this exciting journey together. We look forward to sharing more of your child's learning and growth in the weeks to come.

Warmly,

Ms. Janice

IB PYP Coordinator

A BIG STEP FORWARD: WELCOMING GRADE 1

On April 9, we celebrated a very special milestone at Harbourfront International School—our first-ever Grade 1 Entrance Ceremony!

Welcoming our very first primary student marks a big step forward as we grow from an early childhood center into a full international school. As we pursue candidacy to become an IB PYP school, this moment reflects our commitment to providing a continuous, inquiry-based education.

It was a simple yet meaningful ceremony, and we look forward to many more as our school community continues to grow.

COMING UP

8 May- Dr. Praying Mantis (Guest Speaker)

9- May Birthday Celebrations

9-13 Family Week

19 May- Fire Drill

13,20,27- Swimming classes

27-28 May- Cooking class



Grade 1 Entrance Ceremony



Earthquake Drill



HFIS Easter Adventure



HAPPY BIRTHDAY
Atsuto

HAPPY BIRTHDAY
Yuto

HARBOURFRONT INTERNATIONAL SCHOOL

May Newsletter



STARFISH CLASS

April: WELCOME TO SCHOOL!

LEARNING

Theme Activity:

Our focus is on becoming comfortable with school routines.

English:

We began learning English words and fun songs to practice our new words.

Centers:

We have been using hand strengthening toys, kitchen sets and building blocks to practice using our hands in many ways.

Social and Emotional Learning (SEL):

Our focus is on learning how to self-regulate our emotions and start thinking about the emotions of others.

REMINDERS

May 27th- Cooking Class

WHAT'S ON

April's theme was Welcome to School. We practiced school routines and got used to coming to school every day. We had fun exploring Utsubo Park and finding the best places to play. Everyone tried their best and did so well! Keep up the good work!

In April, we had a birthday party. Happy 2nd Birthday, Yuto! We also had an Easter Party this month. Starfish went out to Utsubo Park on an Easter egg hunt. Everyone enjoyed the game. Then we designed and dyed eggs. It was fun for the children to see the designs appear once the dye was applied.

COMING UP: May: OUR WORLD

In the coming weeks, our Starfish class will begin exploring the theme "Our World." We'll introduce words like Earth, sun, moon, and stars using songs, picture books, and sensory activities to help children connect with the world around them.

We will also explore what lives on the Earth as we visit Utsubo Park. A special part of our world is family, and during Family Week (May 9-13), we'll celebrate the people who care for us. Children will learn simple family words like "mama," "papa," and "baby," share their family photos with classmates, and create family-themed art projects to bring home.



HARBOURFRONT INTERNATIONAL SCHOOL

May Newsletter



SEAHORSE CLASS

APRIL'S THEME:

WHO AM I?
(WHO WE ARE)

LEARNING

Over the past month, we've been exploring the theme "Who am I?". The children have been practicing saying their names clearly and expressing their thoughts, needs, and preferences—such as their favorite colors and fruits.

English & Centers

In English activities, we focused on expanding vocabulary and using simple phrases to communicate. We encouraged children to share their preferences and express themselves using phrases like:

- "It is..." (e.g., It is sunny.)
- "I like..." (e.g., I like apples.)
- "Help please." / "Can I have it?" / "Wait please." / "Stop please." / "More ___ please."

These phrases are becoming part of their daily communication, helping to build both language skills and social awareness.

Social and Emotional Learning (SEL)

This month, we focused on building peer and teacher connections, developing empathy, and learning routines. Children are learning to think independently, make choices, and manage emotions. Self-management and independence are important skills we will continue nurturing together throughout the year. We encourage families to support this journey at home as well—every small step makes a big difference!

Japanese:

日本語のレッスンでは、自分のお名前を言うこと、数字、形、季節についてお話しをしました。今日のダンスの『サンサン体操』では、お友だちみんながノリノリで踊ってくれる姿がとても可愛らしかったです!

During Japanese class, we tried saying our names in Japanese. We also learned how to count numbers, recognize shapes, and talk about the seasons. We enjoyed a dance called "San San Taisou." The way they danced was adorable!



Join us on
Class Dojo

WHAT'S ON

Vocabulary:

Family - Mom, Dad, Grandma, Grandpa, Big/Little Brother, Big/Little Sister, Baby

Words about the following topic:

Spring, Easter, Colours and Fruits

Songs:

- Finger Family, What's your favourite colour, Spring is Here and Head Shoulders Knees & Toes

REMINDERS

Note to Families:

Thank you to everyone who has shared their beautiful **family photos!** If you haven't yet, please send yours in as soon as possible. Join our Class Dojo by scanning the QR code.

MAY'S THEME:

MY FAMILY
(WHO WE ARE)

COMING UP

As we continue learning about ourselves and our families, we'll build on vocabulary and review key words. We'll also begin basic counting and phonics, using role play to support communication and social skills.

HARBOURFRONT INTERNATIONAL SCHOOL



June Newsletter



K1 HARBOUR CLASS



LEARNING

Hello Harbour Class families!

April was full of excitement as we explored the theme "Who We Are." We talked about what makes us special, how we are alike and different, and the wonderful people in our families. The children loved sharing about their homes, friends, and favorite things!

English & Communication:

We practiced simple phrases like:

- "My name is _____"
- "Who is this?"
- "This is my mom/dad/sister."

We focused on the letter S through songs, games, and Smart Board tracing – and in May, we're ready to wiggle into letter T!

Math Fun:

We counted up to 13 with songs, games, and number hunts in the classroom. In May, we'll continue to 14 and 15, exploring numbers through hands-on play and Smart Board activities.

Art Adventures:

In April, the children proudly made their Koinobori (carp streamers), tearing paper, painting, and even using thumbprints for eyes! Coming up, we'll dive into feet painting and paper face crafts – so get ready for some adorable masterpieces!

MAY'S THEME:

WHO AM I? (WHO WE ARE)

Japanese:

5月は、「シャボン玉」「ありさんとごっつんこ」「おべんとうのうた」を歌いました! 中でもしゃぼんだまの歌がお気に入りなようです。製作活動では、折り紙でてんとう虫を折ったり、花の絵をクレヨンで描いたりしました。沢山の色を使って描いたお花を"みて~!!"と嬉しそうなお顔で見せてくれます。またワークシートを使って点線のなぞり書きや、ハサミで直線切りをしました。ひらがなは"あ~ん"までをランダムにフラッシュカードを使ってゲームをしました。

Centers:

We've been using counters to explore basic number sense and addition. The children are learning to combine small groups and count totals through fun, hands-on activities.

SEL(Social and Emotional Learning)

Our focus is on developing self-management and independence.

WHAT'S ON

- Learning about Who We Are and Our Families
- Talking about what makes us special
- Practicing the letter S through songs and tracing
- Counting numbers 1-13 with games and the Smart Board
- Making Koinobori with paint, paper, and thumbprints
- Exploring face puzzles and mirror games
- Practicing kindness, sharing, and helping friends



JUNE'S THEME:

MY FAMILY (WHO WE ARE)

COMING UP

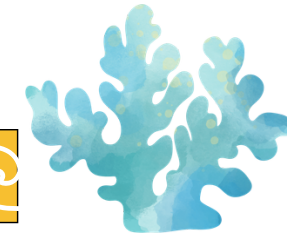
As we continue exploring Who We Are, we'll celebrate Family Week (May 13-16) with Mother's Day and Father's Day crafts, family stories, and songs. We'll also begin practicing the letter T, build on our spring vocabulary, and explore numbers up to 15. Look forward to more joyful moments as we grow together!

REMINDERS

- Please send in a picture of mommy and daddy – we'll use them for a very special craft!
- May 27th - Cooking Class → Get ready for some tiny chefs!
- May 26th to 30th- Show and Tell! Please prepare a family photo for your child to share with everyone.

HARBOURFRONT INTERNATIONAL SCHOOL

May Newsletter



K2 OCEAN CLASS

LEARNING

Inquiry:

Our focus is on communities and who and what are in our communities. We also focused on the school aspect. E.G. "Who is in the school, what do they do, why do they do what they do, etc..."

Math:

We have been using counters to help us with basic addition. We also have been focusing on matching and patterns. We also have been working on their number recognition of the numbers 1-10.

English:

In our English classes we have been focusing on getting the students prepared for the future more complex lessons. We have been focusing on solidifying their basic level so we can help them move up with their level.

Japanese:

4月は「はるがきた」「こいのぼり」など季節の歌を楽しみました。こいのぼりの製作では、切り絵に挑戦! 折り紙を切って開くとお花の形になるのがおもしろかったようで、「もう一回やりたい!」と嬉しそうな声が聞こえてきました。また、ひらがなを書く練習をしたり、きゃ・きゅ・きょなどの小さいひらがなの読み方も学習しました。

Social and Emotional Learning (SEL):

We're helping the children learn to do things on their own—like putting away toys, washing hands, and getting ready by themselves—to build self-management and independence.

WHAT'S ON

We are working on talking about our families and our communities.

- Who are our family members?
- Who is part of our community?
- What do we see in our community?
- What does each member of the community do?



REMINDERS

Show and Tell:

Next week our topic is 'All About Me'. Remember to bring in a family photo to share with the class.

Class Photos:

Photo Day is next Wednesday!

Please make sure your child wears the full school uniform and clean shoes.



HARBOURFRONT INTERNATIONAL SCHOOL



May Newsletter

K3 SKY CLASS AND GRADE 1

LEARNING

Inquiry:

Line of Inquiry: Each person is special and unique.

Key Concept: Perspective

Math:

Chapter 1: Learning numbers, spellings and concepts from 0 to 5.

English:

We assessed phonics, reading, and comprehension to understand each child's English level and provide targeted support for their language development.

Social and Emotional Learning (SEL)
Our focus is on developing self-management and communication skills.

K3 UNIT OF INQUIRY

WHO WE ARE IDENTITY

WHAT'S ON

This month, we explored the theme *Me and My Community*.

We began by learning all about ourselves—what we like, what makes us special, and what we have in common with one another. We had so much fun asking and answering “about you” questions, helping us build friendships and learn more about our classmates.

As we continue learning this month, we are discovering how people work together to help a community grow. We are learning about the different roles people play and how everyone is connected. Through playful role-plays and exciting team games, we're finding that working together isn't just easier—it's also a lot more fun!

COMING UP

**Focus for the month of May:
People work together in a
community. (CONNECTION)**

As part of our Inquiry, we will go on a community walk to explore our school and the neighborhood around us. Along the way, we'll meet local community members in different roles and learn how they help and support others.



REMINDERS

Please always charge and bring Ipads and headphones everyday!



HARBOURFRONT INTERNATIONAL SCHOOL

May Newsletter



OUR LEARNING JOURNEY: K3 SKY CLASS & GRADE 1



HARBOURFRONT INTERNATIONAL SCHOOL

May Newsletter



GRADE 1

LEARNING

Inquiry:

Line of Inquiry: Each person is special and unique.

Key Concept: Perspective

Math:

Math Assessment

Chapter 1: Numbers 1-10

English:

We assessed phonics, reading, and comprehension to understand each child's English level and provide targeted support for their language development.

Social and Emotional Learning(SEL)

Our focus is on developing their self-management, and organizational skills. We're focusing on guiding the children take care of their things, follow routines, and make responsible choices during the day.

G1 UNIT OF INQUIRY

WHO WE ARE WELL-BEING

WHAT'S ON

Central Idea:

The choices we make may affect our health and wellbeing.

- Physical and mental health. (FORM)
- The effect that exercise, diet, and rest has on us. (CAUSATION)
- Our responsibility to make balanced choices in our health with our friends and in learning. (RESPONSIBILITY)

COMING UP

As part of our Inquiry into how our choices affect our health and well-being, we will go on a community walk to explore our school and the surrounding neighborhood. This experience helps us understand how the environment and the people around us—such as community helpers—can influence our physical and mental well-being. By observing how different roles support the community, we begin to recognize our own responsibilities in making healthy, balanced choices and caring for others.



REMINDERS

Please always charge and bring Ipads and headphones everyday!

